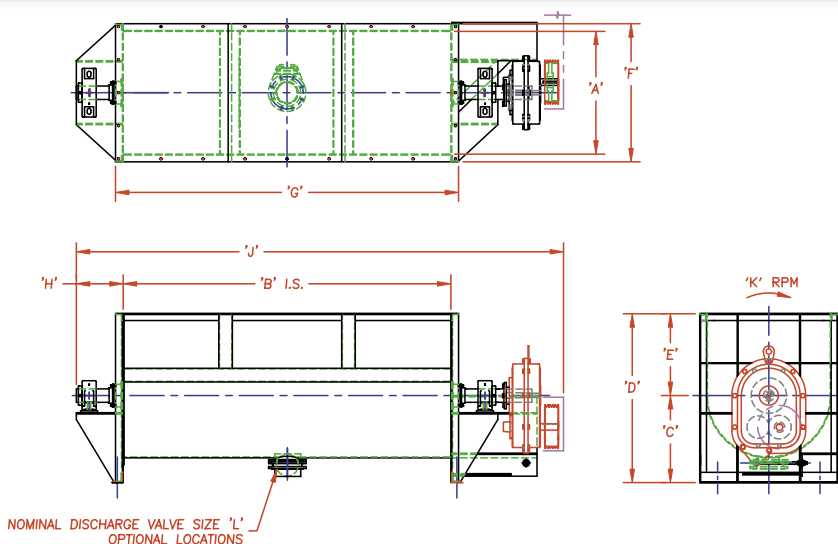


# Mixall Horizontal Batch Mixer

## General Specifications



MODEL	A	B	C	D	E	F	G	H	J	K	L
M-154	1 5	4 8	29 1/2	43 1/2	1 4	19 1/4	52 1/4	10 3/4	72	7 8	4
M-204	2 0	4 8	3 2	4 6	1 4	24 1/4	52 1/4	10 3/4	7 2	7 6	4
M-244	24	48	34	49	15	28 3/8	52 3/8	1 1	8 1	6 0	4
M-246	2 4	7 2	3 4	4 9	15	28 3/8	76 3/8	1 1	10 5	56	4
M-248	2 4	9 6	3 4	4 9	1 5	28 3/8	100 3/8	11 1/4	13 2	5 6	4
M-2410	2 4	12 0	3 4	4 9	1 5	28 3/8	124 3/8	11 1/4	156	5 6	4
M-306	3 0	7 2	37 3/4	61 3/4	2 4	34 3/8	76 3/8	11 3/4	11 1	4 5	6
M-308	3 0	9 6	37 3/4	61 3/4	2 4	34 3/8	100 3/8	12 1/4	13 7	4 5	6
M-366	3 6	7 2	41 1/4	65 1/4	2 4	40 3/8	70 3/8	12 1/4	11 3	3 7	6
M-368	3 6	96	41 1/4	65 1/4	2 4	40 3/8	100 3/8	12 1/4	13 7	3 7	6
M-3610	3 6	12 0	41 1/4	65 1/4	2 4	40 3/8	124 3/8	12 1/4	16 2	3 7	6
M-3612	3 6	14 4	41 1/4	65 1/4	2 4	40 3/8	148 3/8	12 1/4	18 6	3 7	6
M-428	4 2	9 6	45 1/4	73 1/4	28	46 1/2	100 1/2	12 1/4	13 8	3 2	8
M-4210	4 2	12 0	45 1/4	73 1/4	2 8	46 1/2	124 1/2	12 1/4	16 4	3 2	8
M-4212	4 2	14 4	45 1/4	73 1/4	2 8	46 1/2	148 1/2	12 1/4	18 8	3 2	8
M-488	4 8	9 6	48 1/4	81 1/4	3 3	52 1/2	100 1/2	12 1/4	14 0	2 8	8
M-4810	4 8	12 0	48 1/4	81 1/4	3 3	52 1/2	124 1/2	12 1/4	168	2 8	8
M-4812	4 8	14 4	48 1/4	81 1/4	3 3	52 1/2	148 1/2	12 1/4	19 2	2 8	8
M-5410	5 4	12 0	51 3/4	88 3/4	37	59 1/2	125 1/2	14 1/4	177	2 5	8
M-5412	5 4	14 4	51 3/4	88 3/4	3 7	59 1/2	149 1/2	14 1/4	201	2 5	8
M-6010	6 0	12 0	5 6	10 1	45	65 1/2	125 1/2	1 7	18 1	2 0	1 0
M-6012	6 0	14 4	5 6	10 1	4 5	65 1/2	149 1/2	1 7	205	2 0	1 0
M-6610	6 6	12 0	60 1/2	105 1/2	4 5	71 1/2	125 1/2	1 7	15 7	2 0	1 0
M-6612	6 6	14 4	60 1/2	105 1/2	4 5	71 1/2	149 1/2	1 7	20 5	2 0	1 0
M-7210	7 2	12 0	62 3/4	111 3/4	4 9	77 3/4	125 3/4	1 7	15 7	1 8	1 2
M-7212	7 2	14 4	62 3/4	111 3/4	4 9	77 3/4	149 3/4	1 7	20 5	1 8	1 2
M-8410	84	120	62 3/4	122 3/4	6 0	89 3/4	125 3/4	18 1/2	19 2	1 6	1 2
M-8412	8 4	14 4	68 3/4	122 3/4	6 0	89 3/4	149 3/4	18 1/2	21 6	1 6	1 2
M-8415	8 4	18 0	68 3/4	122 3/4	6 0	89 3/4	185 3/4	18 1/2	252	1 6	1 2

Note: All dimensions are in inches except for "K" which is RPMs.

S. Howes, Inc.  
 25 Howard St.  
 Silver Creek, NY 14136  
[showes.com](http://showes.com)

Phone: (716) 934-2611  
 Toll Free: (888) 255-2611  
 Fax: (716) 934-2081  
[sales@showes.com](mailto:sales@showes.com)



Established 1856

© 2005 S. Howes, Inc., All rights reserved.

# Mixall Horizontal Batch Mixer

## General Specifications



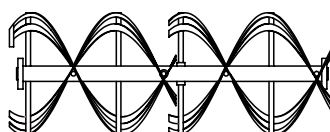
### MIXALL SPECIFICATIONS

(assumes 45 lbs./cu.ft. bulk density material)

Model	Capacity (ft <sup>3</sup> ) Top of Agitator	Capacity (lbs)	Shaft Speed (RPM)	Minimum Standard HP	Maximum Standard HP
M-154	5.5	247	90	0.5	2
M-204	9.8	442	67	1	5
M-244	14.1	637	56	1.5	5
M-246	21.2	955	56	2	7.5
M-248	28.2	1271	56	3	10
M-306	33.1	1489	45	5	15
M-308	44.1	1985	45	5	15
M-366	47.8	2152	37	7.5	20
M-368	63.6	2862	37	7.5	20
M-3610	79.5	3577	37	7.5	25
M-3612	95.4	4293	37	10	30
M-428	86.8	3906	32	10	40
M-4210	108.0	4861	32	10	40
M-4212	129.6	5833	32	15	50
M-488	113.2	5094	28	15	50
M-4810	141.2	6353	28	15	50
M-4812	169.4	7624	28	20	60
M-5410	178.5	8031	25	20	75
M-5412	214.2	9637	25	20	75
M-6010	220.9	9939	22	25	80
M-6012	265.0	11927	22	25	100
M-6610	267.4	12031	20	30	100
M-6612	320.8	14438	20	30	100
M-7210	318.7	14341	19	40	125
M-7212	382.4	17210	19	40	125
M-8410	433.8	19519	16	50	200
M-8412	520.5	23423	16	50	200
M-8415	650.6	29279	16	75	250

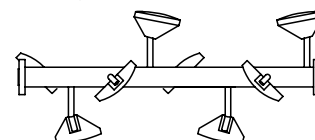
### DETAILS OF STANDARD MIXALL CONSTRUCTION

- End plates are reinforced to provide stiffness and support. Blind-end plate is bolted to the tank and the drive end is welded - both at a 90 degree angle - no radius.
- Uniquely designed double ribbon type agitator assembly features ribbons welded to cross-arms. Paddle agitators feature paddles that can be either welded or bolted to cross arms.
- A solid steel shaft with flange type bearings may be used when the torque of the cylinder is under 24,000 inch-pounds. A tubular shaft is used on applications between 24,000 and 560,000 inch-pounds of torque.
- Drive-end bearings and journals will withstand high starting torque at maximum recommended horsepower. Bearings are 2 1/2 times the calculated radial load. High quality, self-aligning type bearings are furnished on all Mixalls.
- Bearings are mounted to allow for alignment of cylinder and have lock screws to secure the bearing locations.
- Support cradles under the tank are available to provide improved distribution of heavier loads.



Double Ribbon Agitator

Paddle Agitator



Mixers have been designed and built up to 1,500 cubic foot capacities

Custom designs are job-engineered to meet your specific applications

See "Mixer Accessories & Options" brochure for further details

S. Howes, Inc.  
25 Howard St.  
Silver Creek, NY 14136  
showes.com

Phone: (716) 934-2611  
Toll Free: (888) 255-2611  
Fax: (716) 934-2081  
sales@showes.com

